

Villa 25 | \$679,000



 2  1.5  1

Spacious two bedroom villa in elevated position, close to all facilities.

Villa 25 is located in an elevated position, just a short stroll to the clubhouse.

The modern kitchen includes quality Fischer and Paykel appliances including a dishwasher and plenty of storage.

The open plan living area offers low maintenance tile flooring and reverse cycle airconditioning.

The villa is currently undergoing renovation and will be ready to move in very soon!

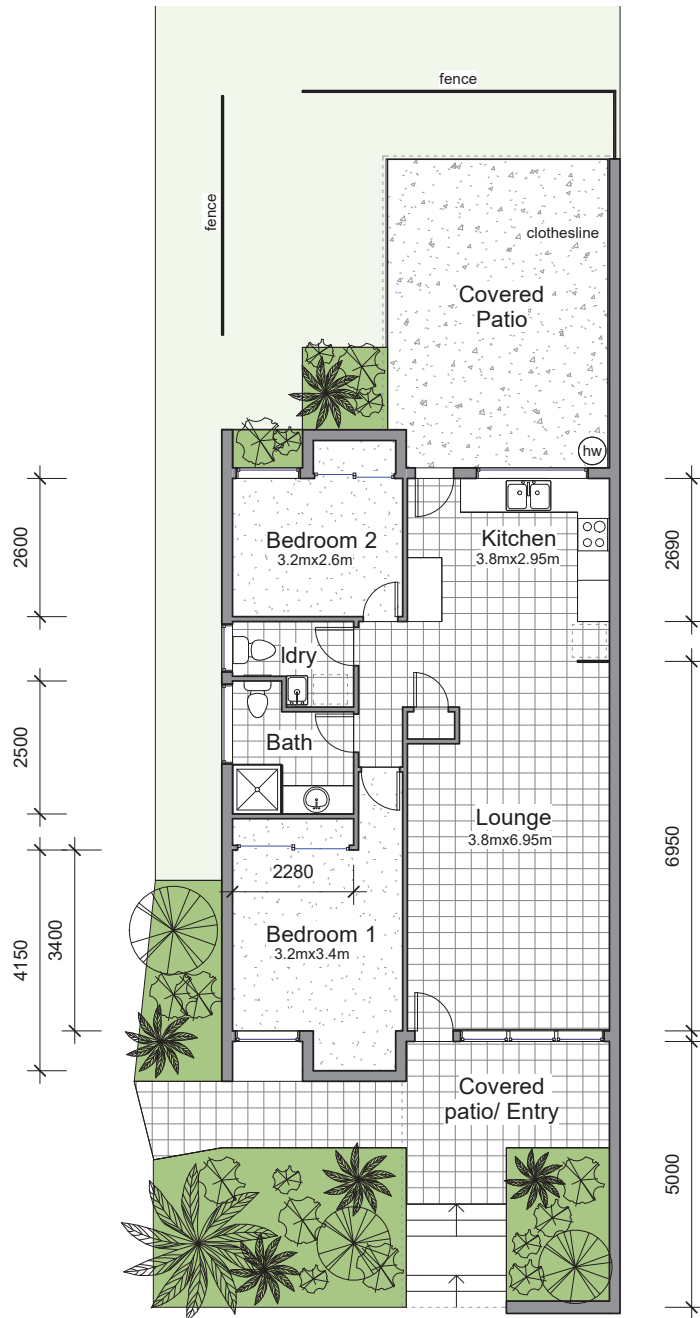


Brookland
ROBERTSON

For more information, please contact
Suella Seminara on 0491 252 766
or sales@brookland.com.au

Pricing correct as at 14 March 2025 and may change at Operator's discretion. Home layout, window coverings, furniture, white goods, fittings and floor coverings are indicative only.

18 Romulus Street, Robertson QLD 4109 | brookland.com.au



GROSS FLOOR AREA

Dwelling: 76m²
 External: 34m²
 Garage: 18m²
 Total: 128m²

