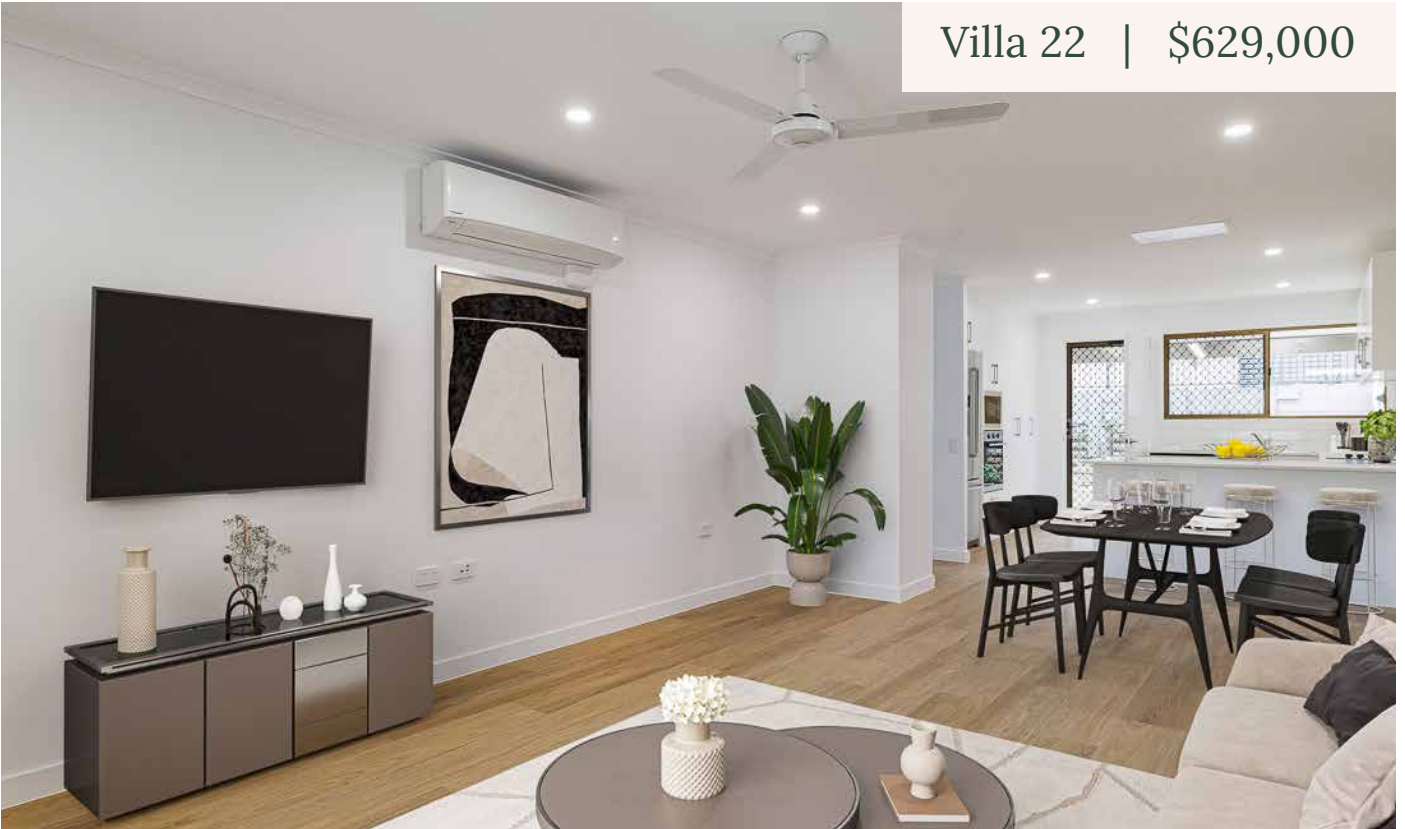


Villa 22 | \$629,000



 2  1.5  1

## Spacious two bedroom villa with private garden outlook and fully fenced backyard

Villa 22 is located in an elevated position location, close to the cafe and all amenities.

The modern kitchen includes quality Fischer and Paykel appliances including a dishwasher as well as plenty of storage.

The open plan living area offers low maintenance vinyl flooring and reverse cycle air-conditioning.

The villa is currently undergoing renovation and will be ready to move in very soon!

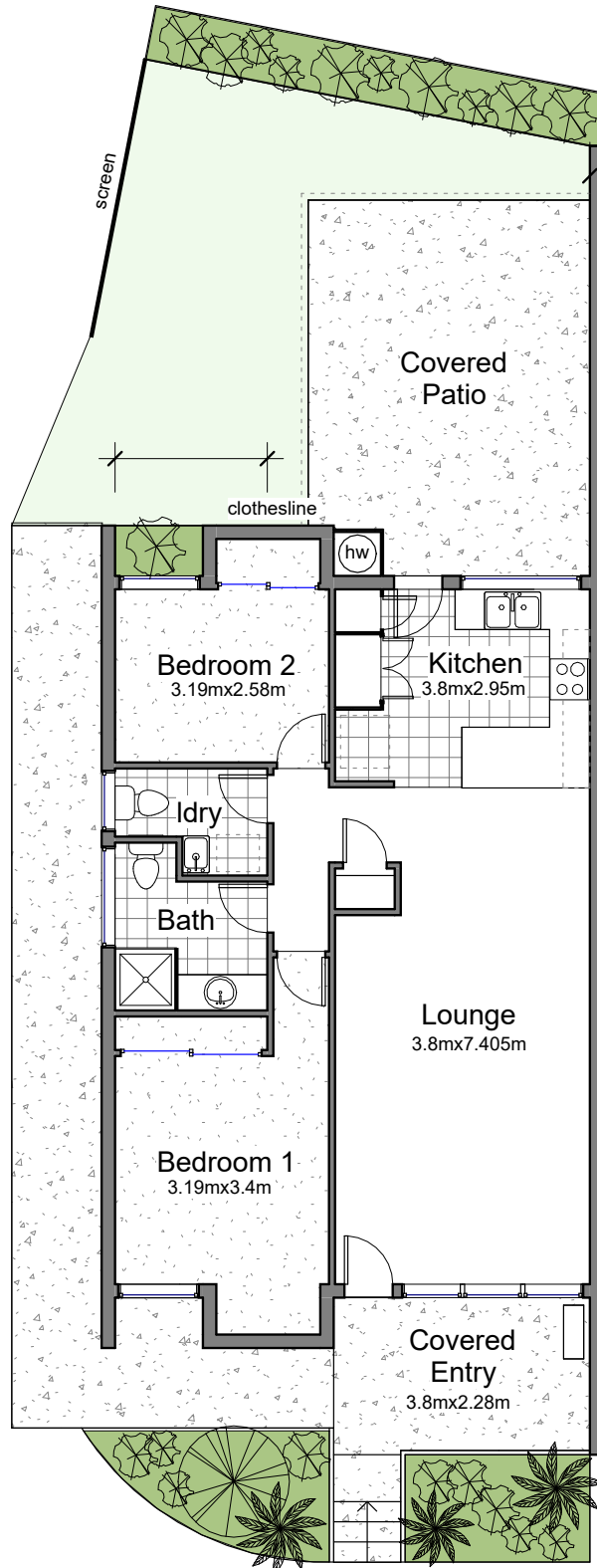


Brookland  
ROBERTSON

For more information, please contact  
Suella Seminara on 0491 252 766  
or [sales@brookland.com.au](mailto:sales@brookland.com.au)

Pricing correct as at 17 October 2024 and may change at Operator's discretion. Home layout, window coverings, furniture, white goods, fittings and floor coverings are indicative only.

18 Romulus Street, Robertson QLD 4109 | [brookland.com.au](http://brookland.com.au)



GROSS FLOOR AREA

Dwelling: 76m<sup>2</sup>

External: 32m<sup>2</sup>

Garage: 18m<sup>2</sup>

Total: 126m<sup>2</sup>